

# TRASH ART SCULPTURE

Even trash can be recycled into something beautiful! Invite your friends and family to each create sculptures out of “building materials” found around your house. When you’re finished, use a flashlight to see what you can find in the shadows!

## YOU WILL NEED

Low Heat Glue Gun

Paint (Optional)

Recyclables From Around  
Your House

Scissors (Optional)

Flashlight (Optional)

## INSTRUCTIONS

Collect trash and recyclables from around the house, they will serve as the materials you’ll use to build your sculpture.

Use the pieces to experiment with different arrangements until you find one that you like.

Use the glue gun when necessary to glue pieces of your sculpture together, try and make the sculpture as sturdy as possible.

As an optional step, consider painting some or all of the pieces once they are arranged.

When the sculptures are finished, arrange them near each other and experiment with the flashlight to see what objects, people or animals you can find in the shadows!



# LOVE METEORITE NIGHT LIGHT

Shed some love rays with your own meteorite light! It's your reminder of how there's good even in the darkest places. Be part of our meteor shower by sharing a picture of your light with the hashtag **#GOODERTOGETHER**

## YOU WILL NEED

Cardboard	White Glue	Blue Tissue Paper	Pencil
Scissors	White Paint	String Lights	Baking Soda

## INSTRUCTIONS

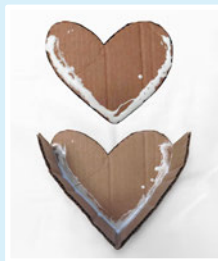
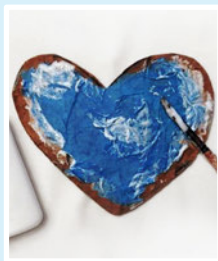
Trace two heart meteor shapes from the next page onto cardboard and cut them out. Only one of the hearts needs to have holes cut, leave the other whole.

On the heart piece with holes, glue strips of the tissue paper on one side so that it covers the heart like in the second image below, wait 10-15 minutes for it to dry.

Put a layer glue along the cut seams on the other side of the heart, then mix equal parts baking soda and white paint. Cover it with your paint mixture being careful not to get it on the blue parts, then wait 10-15 minutes for it to dry.

Time to assemble your meteor! Start by folding the rectangular cardboard strip in half and then put white glue along one side like in the third image below, then affix it to one of the heart cutouts. Hold it in place while it dries for 5 minutes.

Repeat the previous step on the other side of the rectangular piece and affix the other cardboard heart to the light, press together firmly and then let it dry for an additional 5 minutes. Place your string lights inside and enjoy!



# METEORITE PATTERNS

